

2.4 GHz to 2.5 GHz, 12 dBi MIMO Omni Antenna, 2 Type N Female, PVC Radome

KP-24-DOMNI-12



Features

- All weather operation
- Includes heavy duty steel mast mounting brackets
- PVC radome
- Integral two N-Female connector
- 2x2 MIMO capable
- 360° Omnidirectional Pattern

Applications

- 2400 Band Operation
- Point to Multipoint and Non Line of Sight (NLOS) Applications

- 12 dBi gain

Description

The LTE outdoor omnidirectional KP-24-DOMNI-12 antenna from KP Performance is a high performance RF component which operates from 2400 to 2500 MHz. The KP-24-DOMNI-12 antenna is ideal for 4G, LTE, PCS and 2x2 MIMO applications. The Multi-Band design of the KP Performance KP-24-DOMNI-12 antenna can be used for a wide array of cellular telecommunication wireless applications where wide coverage is desired. KP Performance KP-24-DOMNI-12 can be used to distribute Cellular signals throughout an outdoor area.

The Type N connectorized KP-24-DOMNI-12 antenna with vertical/horizontal polarization from KP Performance provides excellent outdoor coverage for all base station applications. The Type N connectorized KP-24-DOMNI-12 antenna from KP Performance excels in large open areas. The mounting bracket and hardware are included for easy installation. KP Performance LTE outdoor omnidirectional with two Type N female purchases will ship the same day. Our KP-24-DOMNI-12 antenna are in-stock and available for immediate shipment.

Configuration

Design	Omni
Band Type	Single
Radiation Pattern	Directional
Polarization	Vertical/Horizontal
Connector Type	N Female
Number of Ports	2
Lightning Protection	DC Ground

Electrical Specifications

Description	Minimum	Typical	Maximum	Units
Frequency Range	2,400		2,500	MHz
Input VSWR		1.5:1		
Impedance		50		Ohms
Gain			12	
Input Power			50	Watts

Mechanical Specifications

Click the following link (or enter part number in "SEARCH" on website) to obtain additional part information including price, inventory and certifications:
[2.4 GHz to 2.5 GHz, 12 dBi MIMO Omni Antenna, 2 Type N Female, PVC Radome KP-24-DOMNI-12](#)

2.4 GHz to 2.5 GHz, 12 dBi MIMO Omni
Antenna, 2 Type N Female, PVC Radome

KP-24-DOMNI-12



Radome Material	PVC
Size	
Length	45.66929 in [116 cm]
Width	2.99213 in [76 mm]
Height	2.99213 in [76 mm]
Mounting Mast Diameter	1.18 to 2.16 in [29.97 to 54.86 mm]
Weight	5 lbs [2.27 kg]

Environmental Specifications

Temperature	
Operating Range	-40 to +60 deg C
Wind Survivability	134.216 MPH [216 KPH]
Wind Loading	

Plotted and Other Data

Notes:

Appendix

Electrical Downtilt: Angle in the antenna's elevation pattern in which the maximum gain occurs.

Gain: Antenna's average gain.

Front to Back Ratio @ 180°±30°: Average difference between the antenna's maximum gain and the maximum gain in the antenna's back lobe over ±30° angles.

Cross-polarization Ratio (dB): Typical difference between the co-polarization and cross-polarization gain across the sector's 3 dB Beam Width.

Dedicated to serving the needs of the Wireless Internet Service Provider (WISP) market, KP Performance Antennas offers purpose built products that reliably perform in the field. KP Performance Antennas product line consists of Yagi, Grid, Omni, Dish and other style antennas that operate in the 900 MHz, 2.4 GHz, 3 GHz, and 5 GHz frequencies.

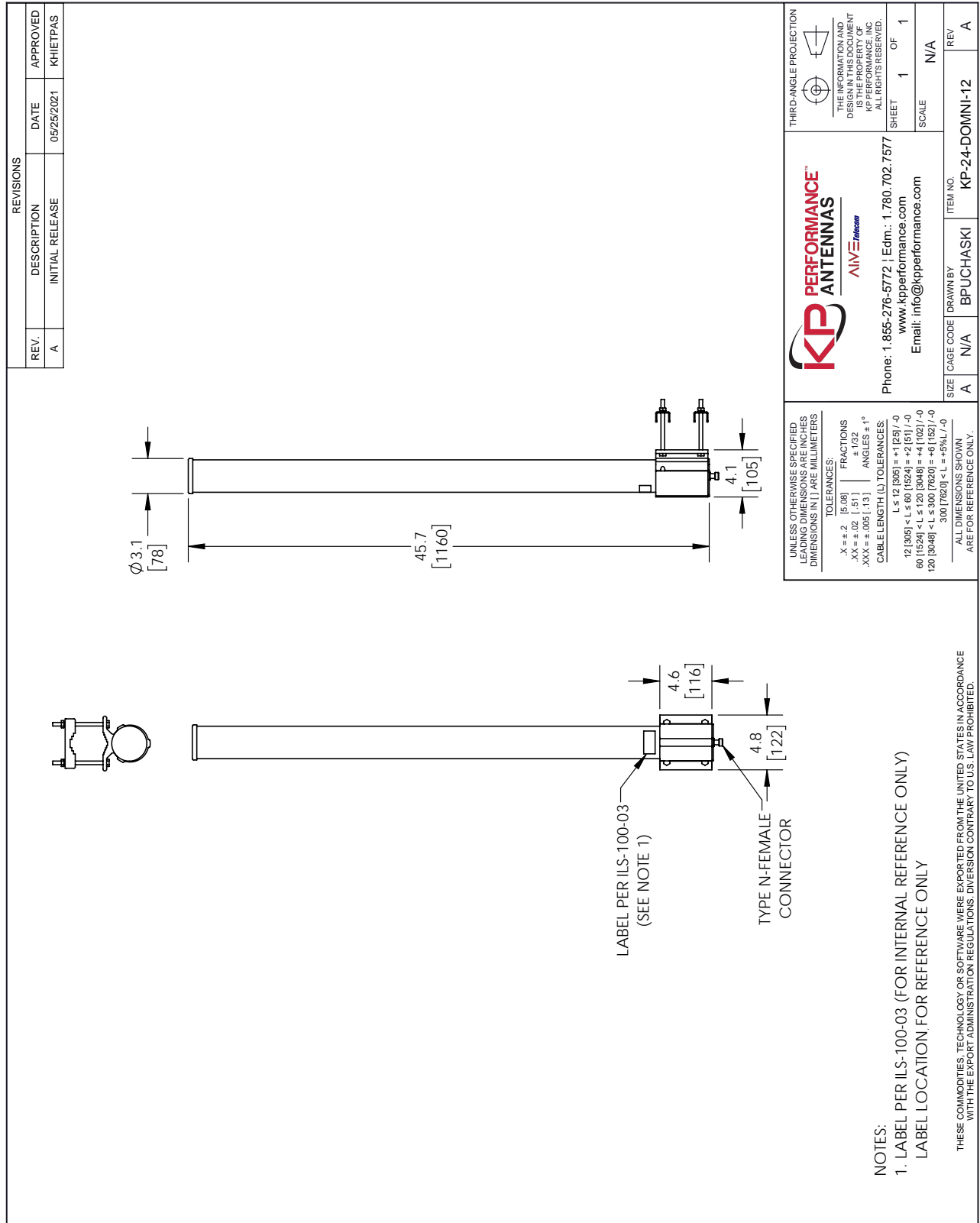
Click the following link (or enter part number in "SEARCH" on website) to obtain additional part information including price, inventory and certifications: [2.4 GHz to 2.5 GHz, 12 dBi MIMO Omni Antenna, 2 Type N Female, PVC Radome KP-24-DOMNI-12](https://www.kpperformance.com/2.4ghz-2.5ghz-12-dbi-mimo-omni-antenna-2-type-n-female-pvc-kp-24-domni-12)

URL: <https://www.kpperformance.com/2.4ghz-2.5ghz-12-dbi-mimo-omni-antenna-2-type-n-female-pvc-kp-24-domni-12-p.asp>

The information contained within this document is accurate to the best of our knowledge and representative of the part described herein. It may be necessary to make modifications to the part and/or the documentation of the part in order to implement improvements. KP Performance reserves the right to make such changes as required. Unless otherwise stated, all specifications are nominal. KP Performance does not make any representation or warranty regarding the suitability of the part described herein for any particular purpose, and KP Performance does not assume liability arising out of the use of any part or document.

2.4 GHz to 2.5 GHz, 12 dBi MIMO Omni Antenna, 2 Type N Female, PVC Radome

KP-24-DOMNI-12 CAD Drawing



T-Rev.D